

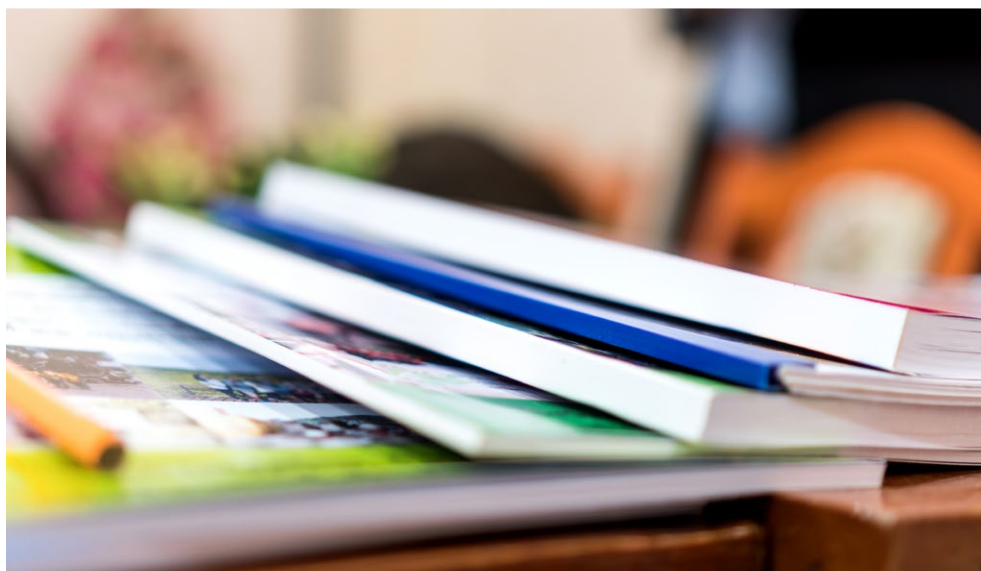
Pittsburg Unified School District

2000 Railroad Avenue Pittsburg, CA 94565 ▪ www.pittsburgusd.net
Janet Schulze, Superintendent ▪ jschulze@pittsburgusd.net ▪ (925) 473-2300

SARC

2022-23

School Accountability
Report Card
Published in 2023-24



Hillview Junior High School

Grades 6-8
CDS Code 07-61788-6061162

Heidi Leber, Principal
hleber@pittsburgusd.net

333 Yosemite Drive
Pittsburg, CA 94565
(925) 473-2380

www.pittsburg.k12.ca.us/hillview





Principal's Message

At Hillview Junior High School, we envision a respectful and trusting student-centered environment with:

- Strong community-school connections
- Shared decision-making
- Clear and high expectations
- A collaborative, cooperative, and safe learning and work environment
- Appreciation of our cultural and ethnic diversity
- Respect for individual differences
- Ongoing reflection, assessment, and evaluation of all facets of the learning community
- An integrated, interdisciplinary, multicultural curriculum accessible to all students

As a schoolwide program, our goal is to provide relevant, challenging work for all students as we link business, community and parents. We view parents as partners in providing experiences that are the foundation and support of learning. Our goal is to prepare our diverse student body with the knowledge and skills to face the challenge of living and working in the technological, information-based world of the 21st century.

School Mission Statement

Hillview Junior High School collaborates with students, parents and community partners to prepare tomorrow's leaders for their future using a strategic approach of developing critical thinking, emphasizing effective communication, and instilling accountability and independence.

Parental Involvement

Hillview is a Community School and our Community School Coordinator collaborates with the school community to provide opportunities for our parents to be a participant in the Hillview Community and make our school a better place for our students!

Our choir and band booster programs are our largest parent-supported programs. We have approximately 100 students involved in our band and choir programs. We have a core group of parent volunteers that give their time at the school on a regular basis.

Our English Learner Advisory Committee (ELAC) and our School Site Council (SSC) meet monthly to discuss school programs, review and create the Site Plan for the upcoming year, and discuss parent concerns. Our parents also represent our school on the District Advisory Committee (DAC) and District English Learner Advisory Committee (DELAC).

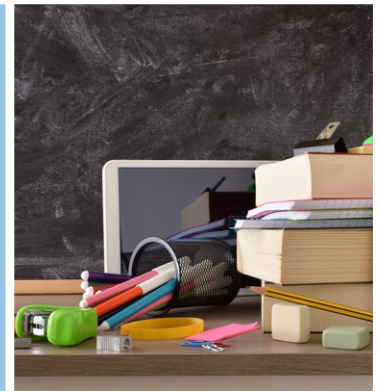
For more information on how to become involved, please contact Julian Rivera at jrivera@pittsburgusd.net or (925) 473-2380 ext. 5163.

School Safety

The school safety plan identifies emergency procedures and security protocols. Students and staff are prepared to respond to various emergencies through regular drills and in-class discussions with regard to safety and personal security. The safety plan addresses information regarding the physical, social and cultural aspects of the school environment. It is reviewed annually and updated accordingly. Included in the safety plan are school and evacuation maps with directions regarding how to evacuate.

In addition, the district has developed a Crisis Intervention Plan to activate in the event of a crisis. Support staff is available to provide targeted support in the event of a crisis (e.g., most schools have a psychologist who is available for crisis counseling in the event of a tragic event). The school safety plan may be accessed through our website. Parents and community members may also request a hard copy by visiting the school.

The school safety plan was last reviewed, updated and discussed with the school faculty in September 2023.



School Accountability Report Card

In accordance with state and federal requirements, the School Accountability Report Card (SARC) is put forth annually by all public schools as a tool for parents and interested parties to stay informed of the school's progress, test scores and achievements.

District Mission Statement

It is the mission of Pittsburg Unified School District (PUSD) to inspire our students, to ensure they achieve equity in academic excellence and to bring students closer together through shared experiences in learning. We believe the cultural diversity of our community, and our youth are our greatest assets. We endeavor to bring our students to their fullest potential and to create lifelong learners who will contribute positively to the world.

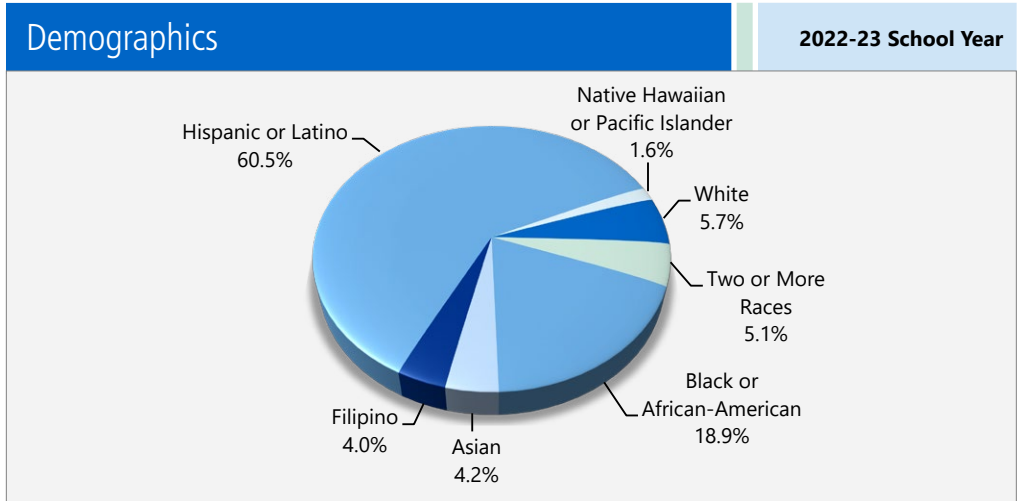
Governing Board

- Ms. Taylor Sims, President
- Ms. Heliodoro Moreno, Vice President
- Mr. George Miller, Trustee
- Mr. De'Shawn Woolridge, Trustee
- Mr. Destiny Briscoe, Trustee



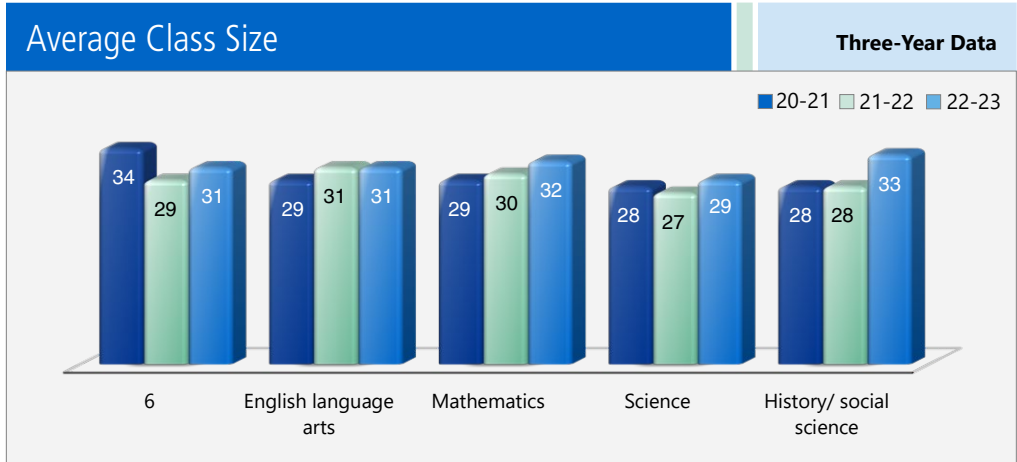
Enrollment by Student Group

The total enrollment at the school was 910 students for the 2022-23 school year. The pie chart displays the percentage of students enrolled in each group.



Class Size Distribution

The bar graph displays the three-year data for average class size, and the table displays the three-year data for the number of classrooms by size. The number of classes indicates how many classrooms fall into each size category (a range of total students per classroom). At the secondary school level, this information is reported by subject area rather than grade level.



Number of Classrooms by Size Three-Year Data

Grade	2020-21			2021-22			2022-23		
	1-20	21-32	33+	1-20	21-32	33+	1-20	21-32	33+
6		22	16	2	34	1		20	16
Subject	Number of Students								
	1-22	23-32	33+	1-22	23-32	33+	1-22	23-32	33+
English language arts		19			16	1		13	6
Mathematics	1	19			17	2		10	8
Science		19	1		17	2		17	3
History/social science	1	16	2		18			13	6

Enrollment by Student Group

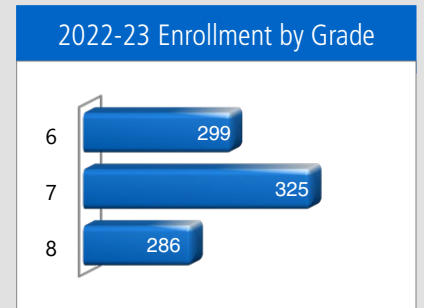
Demographics

2022-23 School Year

Female	49.00%
Male	51.00%
Non-Binary	0.00%
English learners	18.20%
Foster youth	0.30%
Homeless	3.40%
Migrant	0.00%
Socioeconomically Disadvantaged	80.80%
Students with Disabilities	11.00%

Enrollment by Grade

The bar graph displays the total number of students enrolled in each grade for the 2022-23 school year.





Suspensions and Expulsions

This table shows the school, district, and state suspension and expulsion rates collected between July through June, each full school year respectively. Note: Students are only counted one time, regardless of the number of suspensions.

Suspensions and Expulsions							Three-Year Data		
	Hillview JHS			Pittsburg USD			California		
	20-21	21-22	22-23	20-21	21-22	22-23	20-21	21-22	22-23
Suspension rates	0.00%	7.20%	9.80%	0.00%	5.80%	6.10%	0.20%	3.20%	3.60%
Expulsion rates	0.00%	0.20%	0.00%	0.00%	0.00%	0.00%	0.00%	0.10%	0.10%

Note: Data collected during the 2020–21 school year may not be comparable to later years of this collection due to differences in learning mode instruction in response to the COVID-19 pandemic.

Suspensions and Expulsions by Student Group

Suspensions and Expulsions by Student Group		2022-23 School Year	
Student Group	Suspensions Rate	Expulsions Rate	
All Students	9.80%	0.00%	
Female	8.40%	0.00%	
Male	11.20%	0.00%	
Non-Binary	0.00%	0.00%	
American Indian or Alaska Native	0.00%	0.00%	
Asian	5.10%	0.00%	
Black or African American	23.90%	0.00%	
Filipino	2.70%	0.00%	
Hispanic or Latino	5.10%	0.00%	
Native Hawaiian or Pacific Islander	15.80%	0.00%	
Two or More Races	21.40%	0.00%	
White	7.40%	0.00%	
English Learners	4.80%	0.00%	
Foster Youth	0.00%	0.00%	
Homeless	13.00%	0.00%	
Socioeconomically Disadvantaged	11.10%	0.00%	
Students Receiving Migrant Education Services	0.00%	0.00%	
Students with Disabilities	14.90%	0.00%	

Board Goals

1. Student Achievement

- Students will demonstrate continuous improvement in academic excellence and be prepared for life after graduation, as measured by clear and accessible multiple assessments
- Opportunity gaps in grades and test scores will have accelerated reduction for our most vulnerable population through purposeful interventions and supports, including Ethnic Studies
- Our belief is every student is entitled to a high school diploma and our goal and commitment is to achieve a 100% graduation rate with a commitment to closing gaps in competencies by graduation.
- Every student deserves a quality and equitable education. Our students will demonstrate improvements in literacy, and gain knowledge in financial literacy.

2. Powerful Instruction

- Effective instruction aligned to the common core will be expected, supported and measured to ensure continuous improvement of student achievement

3. Outstanding Staff

- The district will recruit diverse, highly qualified and appropriately credentialed teachers and staff, with a commitment for teachers and staff to be representative of our community
- The district will support, retain and promote quality staff through good working conditions, competitive total compensation packages, and coaching and professional development

4. Quality Learning Environment

- High-quality facilities
- Safe, orderly and secure schools
- School site culture of caring and respect
- State-of-the-art technology
- Diverse, current, comprehensive curriculum and materials

5. High-Performing, Accountable Organization

- Fiscal stability and responsible long-range planning
- Comprehensive accountability system, including yearly progress reports on programs and services that contain the need, goal, measurement and outcome
- Effective informational and instructional technology
- Responsible, respectful, efficient and transparent service

Continued on page 5



California Physical Fitness Test

Each spring, all students in grades 5, 7 and 9 are required to participate in the California Physical Fitness Test (PFT). The Fitnessgram is the designated PFT for students in California public schools put forth by the State Board of Education. Due to changes to the 2021–22 and 2022–23 PFT administration, only participation results are required for the five fitness areas.

Encouraging and assisting students in establishing lifelong habits of regular physical activity is the primary goal of the Fitnessgram. The table shows the percentage of students participating in each of the five fitness components for the most recent testing period. For more detailed information on the California PFT, please visit www.cde.ca.gov/ta/tg/pf.

California Physical Fitness Test

2022-23 School Year

Percentage of Students Participating In Each Of The Five Fitness Components

Grade	Component 1:	Component 2:	Component 3:	Component 4:	Component 5:
	Aerobic Capacity	Abdominal Strength and Endurance	Trunk Extensor and Strength and Flexibility	Upper Body Strength and Endurance	Flexibility
7	96.3%	95.5%	96.6%	95.5%	97.2%

Chronic Absenteeism by Student Group

Chronic Absenteeism by Student Group

2022-23 School Year

Student Group	Cumulative Enrollment	Chronic Absenteeism Eligible Enrollment	Chronic Absenteeism Count	Chronic Absenteeism Rate
All Students	986	971	316	32.50%
Female	486	478	148	31.00%
Male	500	493	168	34.10%
Non-Binary	0	0	0	0.00%
American Indian or Alaska Native	2	2	1	50.00%
Asian	39	39	7	17.90%
Black or African American	188	185	83	44.90%
Filipino	37	36	5	13.90%
Hispanic or Latino	591	584	169	28.90%
Native Hawaiian or Pacific Islander	19	18	9	50.00%
Two or More Races	56	53	21	39.60%
White	54	54	21	38.90%
English Learners	209	208	57	27.40%
Foster Youth	5	5	2	40.00%
Homeless	54	49	22	44.90%
Socioeconomically Disadvantaged	805	795	269	33.80%
Students Receiving Migrant Education Services	0	0	0	0.00%
Students with Disabilities	114	113	51	45.10%

Board Goals

Continued from page 4

- Commitment to the environment through sustainable and green practices

6. Meaningful Collaboration, Partnership and Parental Engagement

- Timely and accessible communication with community
- Strategic community partnerships
- Focus on parent and student engagement, including diverse opportunities for involvement
- Strong communication and relationships between parents/guardians and schools
- Proactive engagement in students' academic and personal growth
- Board and superintendent and staff communication

Types of Services Funded

The following services are provided at the district and/or site level:

- Collaboration and Intervention Team
- Professional development including ELA and math trainings, cross-cultural language and academic-development ELD and data protocol
- Parent and family engagement opportunities and training
- Extended-day and summer intervention programs
- College-readiness programs
- Counseling
- Class-size reduction
- Summer programs
- Credit recovery programs

California School Dashboard

The California School Dashboard (Dashboard) <https://www.caschooldashboard.org/> reflects California's new accountability and continuous improvement system and provides information about how LEAs and schools are meeting the needs of California's diverse student population. The Dashboard contains reports that display the performance of LEAs, schools, and student groups on a set of state and local measures to assist in identifying strengths, challenges, and areas in need of improvement.

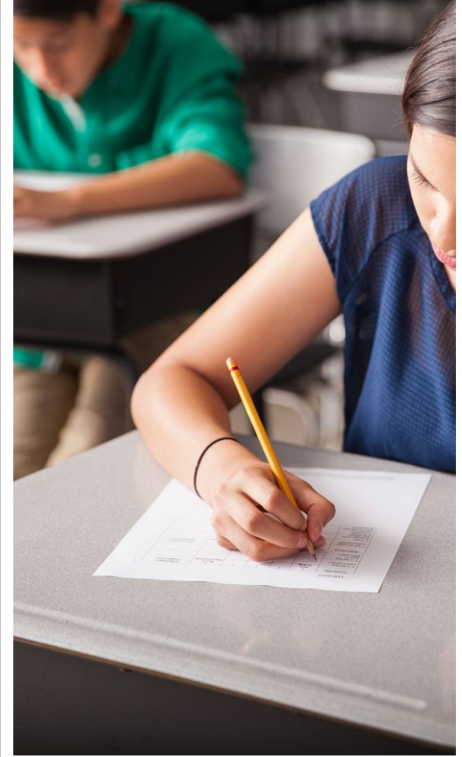


Statewide Assessments

Statewide assessments (i.e., California Assessment of Student Performance and Progress [CAASPP] System includes the Smarter Balanced Summative Assessments for students in the general education population and the California Alternate Assessments [CAAs] for English language arts/literacy [ELA] and mathematics given in grades three through eight and grade eleven. Only eligible students may participate in the administration of the CAAs. CAAs items are aligned with alternate achievement standards, which are linked with the Common Core State Standards [CCSS] for students with the most significant cognitive disabilities).

The CAASPP System encompasses the following assessments and student participation requirements:

- Smarter Balanced Summative Assessments and CAAs for ELA** in grades three through eight and grade eleven.
- Smarter Balanced Summative Assessments and CAAs for mathematics** in grades three through eight and grade eleven.
- California Science Test (CAST) and CAAs for Science** in grades five, eight, and once in high school (i.e., grade 10, 11 or 12).



CAASPP Test Results in Science for All Students

The table below shows the percent of students meeting or exceeding the State standard on the CAASPP—California Science Test (CAST) and the California Alternate Assessment for Science (CAA for Science) for grades 5, 8 and once in high school (i.e., grade 10, 11 or 12).

Percentage of Students Meeting or Exceeding State Standard					Two-Year Data	
Subject	Hillview JHS		Pittsburg USD		California	
	21-22	22-23	21-22	22-23	21-22	22-23
Science	15.00%	18.97%	14.89%	16.17%	29.47%	30.29%

CAASPP Test Results in ELA and Mathematics for All Students

The table below shows the percent of students meeting or exceeding the State standards on the California Assessment of Student Performance and Progress (CAASPP) Smarter Balanced Summative Assessments and California Alternate Assessments (CAAs) for English language arts/literacy (ELA) and mathematics for grades 3-8 and 11.

Percentage of Students Meeting or Exceeding State Standard					Two-Year Data	
Subject	Hillview JHS		Pittsburg USD		California	
	21-22	22-23	21-22	22-23	21-22	22-23
English language arts/literacy	33%	27%	33%	28%	47%	46%
Mathematics	10%	10%	15%	15%	33%	34%

CAASPP by Student Group: Science, English Language Arts and Mathematics

The tables on the following pages display the percentage of students that met or exceeded state standards in science, English language arts/literacy and mathematics for the school by student groups.

The "percentage met or exceeded" is calculated by taking the total number of students who met or exceeded the standard on the Smarter Balanced Summative Assessment plus the total number of students who met the standard on the CAA divided by the total number of students who participated in both assessments.

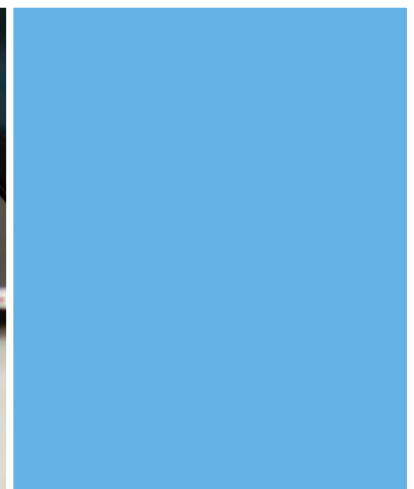
Note: The number of students tested includes all students who participated in the test whether they received a score or not. However, the number of students tested is not the number that was used to calculate the achievement level percentages. The achievement level percentages are calculated using only students who received scores.



CAASPP Test Results by Student Group: Science (grade 8)

Percentage of Students Meeting or Exceeding State Standard					2022-23 School Year
Science					
Group	Total Enrollment	Number Tested	Percentage Tested	Percentage Not Tested	Percentage Met or Exceeded
All students	303	293	96.70%	3.30%	18.97%
Female	149	145	97.32%	2.68%	20.69%
Male	154	148	96.10%	3.90%	17.57%
American Indian or Alaska Native	❖	❖	❖	❖	❖
Asian	❖	❖	❖	❖	❖
Black or African American	57	56	98.25%	1.75%	8.93%
Filipino	12	12	100.00%	0.00%	41.67%
Hispanic or Latino	185	178	96.22%	3.78%	19.66%
Native Hawaiian or Pacific Islander	❖	❖	❖	❖	❖
Two or more races	15	15	100.00%	0.00%	6.67%
White	21	19	90.48%	9.52%	36.84%
English Learners	50	49	98.00%	2.00%	2.04%
Foster Youth	❖	❖	❖	❖	❖
Homeless	❖	❖	❖	❖	❖
Military	63	62	98.41%	1.59%	14.52%
Socioeconomically disadvantaged	247	240	97.17%	2.83%	15.83%
Students receiving Migrant Education services	❖	❖	❖	❖	❖
Students with Disabilities	31	26	83.87%	16.13%	7.69%

❖ Scores are not shown when the number of students tested is ten or less, either because the number of students in this category is too small for statistical accuracy or to protect student privacy.





CAASPP Test Results by Student Group: English Language Arts (grades 6-8)

Percentage of Students Meeting or Exceeding State Standard					2022-23 School Year
English Language Arts					
Group	Total Enrollment	Number Tested	Percentage Tested	Percentage Not Tested	Percentage Met or Exceeded
All students	943	899	95.33%	4.67%	26.56%
Female	468	446	95.30%	4.70%	31.91%
Male	475	453	95.37%	4.63%	21.29%
American Indian or Alaska Native	❖	❖	❖	❖	❖
Asian	38	38	100.00%	0.00%	47.37%
Black or African American	176	167	94.89%	5.11%	13.25%
Filipino	36	36	100.00%	0.00%	61.11%
Hispanic or Latino	574	543	94.60%	5.40%	26.01%
Native Hawaiian or Pacific Islander	18	18	100.00%	0.00%	22.22%
Two or more races	51	49	96.08%	3.92%	24.49%
White	49	47	95.92%	4.08%	41.30%
English Learners	163	147	90.18%	9.82%	1.36%
Foster Youth	❖	❖	❖	❖	❖
Homeless	❖	❖	❖	❖	❖
Military	155	152	98.06%	1.94%	17.88%
Socioeconomically disadvantaged	761	735	96.58%	3.42%	24.45%
Students receiving Migrant Education services	❖	❖	❖	❖	❖
Students with Disabilities	100	93	93.00%	7.00%	5.38%

❖ Scores are not shown when the number of students tested is ten or less, either because the number of students in this category is too small for statistical accuracy or to protect student privacy.





CAASPP Test Results by Student Group: Mathematics (grades 6-8)

Percentage of Students Meeting or Exceeding State Standard					2022-23 School Year
Mathematics					
Group	Total Enrollment	Number Tested	Percentage Tested	Percentage Not Tested	Percentage Met or Exceeded
All students	944	912	96.61%	3.39%	10.44%
Female	469	454	96.80%	3.20%	9.93%
Male	475	458	96.42%	3.58%	10.94%
American Indian or Alaska Native	❖	❖	❖	❖	❖
Asian	38	38	100.00%	0.00%	23.68%
Black or African American	176	169	96.02%	3.98%	4.14%
Filipino	36	36	100.00%	0.00%	30.56%
Hispanic or Latino	574	555	96.69%	3.31%	8.86%
Native Hawaiian or Pacific Islander	18	18	100.00%	0.00%	5.56%
Two or more races	52	48	92.31%	7.69%	12.50%
White	49	47	95.92%	4.08%	25.53%
English Learners	163	158	96.93%	3.07%	0.00%
Foster Youth	❖	❖	❖	❖	❖
Homeless	❖	❖	❖	❖	❖
Military	155	154	99.35%	0.65%	5.19%
Socioeconomically disadvantaged	762	738	96.85%	3.15%	9.38%
Students receiving Migrant Education services	❖	❖	❖	❖	❖
Students with Disabilities	100	93	93.00%	7.00%	1.08%

❖ Scores are not shown when the number of students tested is ten or less, either because the number of students in this category is too small for statistical accuracy or to protect student privacy.





Textbooks and Instructional Materials

California state-adopted textbooks are recommended by district committees, adopted by the board and then purchased. Each site, through funds supplied by the district, has been able to provide each student with a copy of every core textbook to use in class and take home for homework.

The district has purchased textbooks and instructional materials for grades K-12; said textbooks and instructional materials are used by students at each grade level in each school. The Pittsburg Unified School District Governing Board declared during its fall school board meeting that PUSD has provided sufficient textbooks and instructional materials consistent with the state board-adopted curriculum framework cycle.

Textbooks and Instructional Materials List		2023-24 School Year
Subject	Textbook	Adopted
Reading/language arts	<i>StudySync</i> California, Macmillan McGraw Hill ELD <i>StudySync</i> California, Macmillan McGraw Hill	2017
Reading/language arts	Inside Fundamentals Vol. 1 and Vol. 2, National Geographic Learning (6-8)	2014
Mathematics	California Course 1, 2, 3; Algebra, Macmillan McGraw Hill (6-8)	2016
Science	Issues and Science for California, Lab-Aids, Inc. (6-8)	2022
History/social science	<i>Ancient Civilizations</i> , National Geographic Learning (6)	2019
History/social science	<i>Medieval & World History</i> , National Geographic Learning (7)	2019
History/social science	<i>History to WWI</i> , National Geographic Learning (8)	2019
World Languages	Santillana (6-8)	2016
Worlds Languages (DI)	Santillana En Español (6-8)	2017

Quality of Textbooks

The following table outlines the criteria required for choosing textbooks and instructional materials.

Quality of Textbooks		2023-24 School Year
Criteria	Yes/No	
Are the textbooks adopted from the most recent state-approved or local governing-board-approved list?	Yes	

Public Internet Access

Internet access is available at public libraries and other locations that are publicly accessible (e.g., the California State Library). Access to the Internet at libraries and public locations is generally provided on a first-come, first-served basis. Other use restrictions may include the hours of operation, the length of time that a workstation may be used (depending on availability), the types of software programs available on a workstation, and the ability to print documents.

◇ Not applicable.

Availability of Textbooks and Instructional Materials

The following lists the percentage of pupils who lack their own assigned textbooks and instructional materials.

Percentage of Students Lacking Materials by Subject	
2023-24 School Year	
Reading/language arts	0%
Mathematics	0%
Science	0%
History/social science	0%
Visual and performing arts	◇
Foreign language	0%
Health	◇

Currency of Textbooks

This table displays the date when the most recent hearing was held to adopt a resolution on the sufficiency of instructional materials.

Currency of Textbooks	
2023-24 School Year	
Data collection date	9/13/2023

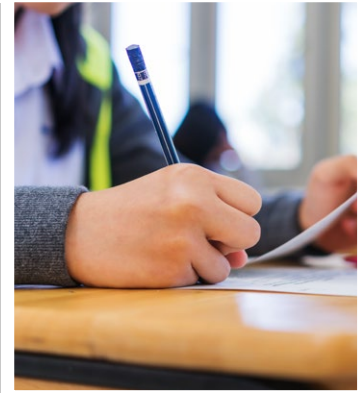




School Facility Good Repair Status

The table shows the results of the school’s most recent inspection using the Facility Inspection Tool (FIT) or equivalent school form. This inspection determines the school facility’s good repair status using ratings of good condition, fair condition or poor condition. The overall summary of facility conditions uses ratings of exemplary, good, fair or poor. At the time of this school facility inspection, no deficiencies were found.

School Facility Good Repair Status		2023-24 School Year
Items Inspected	Repair Status	
Systems: Gas leaks, sewer, mechanical systems (heating, ventilation and HVAC)	Good	
Interior: Interior surfaces (floors, ceilings, walls and window casings)	Good	
Cleanliness: Pest/vermin control, overall cleanliness	Good	
Electrical: Electrical systems	Good	
Restrooms/fountains: Restrooms, sinks and drinking fountains	Good	
Safety: Fire safety, emergency systems, hazardous materials	Good	
Structural: Structural condition, roofs	Good	
External: Windows/doors/gates/fences, playgrounds/school grounds	Good	
Overall summary of facility conditions	Exemplary	
Date of the most recent FIT report	8/1/2023	



Professional Development

The Local Control Accountability Plan (LCAP) and the sites’ School Plan for Student Achievement (SPSA) document the selected focus for professional development. The data from student achievement drives the selection of adult learning opportunities. Based on student-achievement data, including the data from underserved student groups, the district is continuing to focus professional development on integrating the Common Core State Standards in English language arts (ELA) and mathematics, Equity, Social-Emotional Learning and Multi-Tiered Systems of Support.

Every teacher participates in three full-release professional-development days. In addition, educators collaborate with each other in facilitated grade-level/department meetings. Site administrators also provide support and feedback to staff members related to targeted improvements. Pittsburg teachers collaborate with their colleagues to create common lessons/units that they teach in their classrooms.

Summer institutes are numerous and comprehensive. In-depth trainings are available to support implementing core curricula, intervention programs, and English language development (ELD), and include but are not limited to structured engagement, expository writing, reading comprehension and mathematics. Compensation is provided to teachers who attend professional development outside the workday.

Professional Development Days

Number of school days dedicated to staff development and continuous improvement	
2021-22	3
2022-23	3
2023-24	3

School Facilities

Hillview Junior High School was built in 1958 and renovated in the 2001-02 school year (primarily wiring and flooring upgrades). The school includes 44 classrooms, a library, three computer labs, a band room, cafeteria, stage and gymnasium. Technology in each classroom includes LCD projectors, document cameras and upgraded computers. As we begin the 2023-24 school year, we also begin construction of our new campus!

We currently employ four full-time custodians to maintain the campus. Bathrooms, in particular, are cleaned multiple times throughout the day, and school administration checks them to ensure cleanliness.

We have a closed campus with our outer doors secured during the regular school day. Students are supervised at all times, including before and after school, during lunch and during passing periods.

Every site is inspected on a monthly basis according to the guidelines generated by the Williams case settlement. At this time, we have no safety-related discrepancies that have not been corrected. The site administrator and the custodial staff address school cleanliness daily. We clean restrooms on a routine basis, note discrepancies, create work orders and make corrections on a timely basis. School grounds and facilities are adequate for the student enrollments assigned to the site. Deferred maintenance items are scheduled and completed in a timely manner.

Hillview shares an upgraded field with the city of Pittsburg. We are very proud of our turf field. Additionally, we erected solar panels in the northwest parking lot and field.



“As a schoolwide program, our goal is to provide relevant, challenging work for all students as we link business, community and parents.”



Teacher Preparation and Placement

The teacher data displayed in this SARC is from the 2020-21 and the 2021-22 school years. The teacher data for the 2022-23 SARC will not be available prior to February 1, 2024, and therefore is not included. These tables display the number and percent of teacher authorization/assignment as well as the total number and percent of teaching positions at the school, district and state levels. For questions concerning the assignment of teachers outside their subject area of competence or the credential status of teachers, visit the California Commission on Teacher Credentialing website at <https://www.ctc.ca.gov/>.

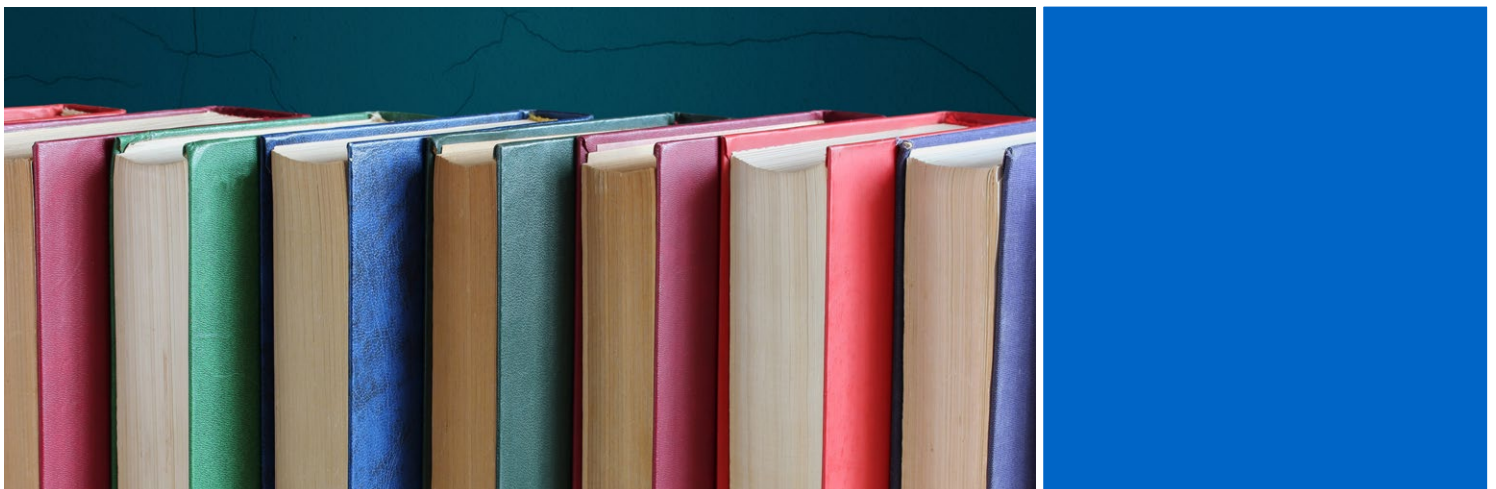
Teacher Preparation and Placement					2020-21 School Year	
Authorization/Assignment	School Number	School Percent	District Number	District Percent	State Number	State Percent
Fully (Preliminary or Clear) Credentialed for Subject and Student Placement (properly assigned)	37.7	90.1%	465.3	89.2%	228,366.1	83.1%
Intern Credential Holders Properly Assigned	1.0	2.4%	5.2	1.0%	4,205.9	1.5%
Teachers Without Credentials and Misassignments ("ineffective" under ESSA)	0.0	0.0%	13.9	2.7%	11,216.7	4.1%
Credentialed Teachers Assigned Out-of-Field ("out-of-field" under ESSA)	1.1	2.7%	15.9	3.0%	12,115.8	4.4%
Unknown	1.9	4.8%	21.1	4.1%	18,854.3	6.9%
Total Teaching Positions	41.8	100.0%	521.5	100.0%	274,759.1	100.0%

Teacher Preparation and Placement					2021-22 School Year	
Authorization/Assignment	School Number	School Percent	District Number	District Percent	State Number	State Percent
Fully (Preliminary or Clear) Credentialed for Subject and Student Placement (properly assigned)	36.3	87.1%	449.5	85.0%	234,405.2	84.0%
Intern Credential Holders Properly Assigned	1.0	2.4%	16.0	3.0%	4,853.0	1.7%
Teachers Without Credentials and Misassignments ("ineffective" under ESSA)	1.3	3.3%	19.7	3.7%	12,001.5	4.3%
Credentialed Teachers Assigned Out-of-Field ("out-of-field" under ESSA)	0.7	1.9%	17.5	3.3%	11,953.1	4.3%
Unknown	2.1	5.2%	26.1	5.0%	15,831.9	5.7%
Total Teaching Positions	41.7	100.0%	529.0	100.0%	279,044.8	100.0%

Note: The data in these tables is based on Full Time Equivalent (FTE) status. One FTE equals one staff member working full time; one FTE could also represent two staff members who each work 50 percent of full time. Additionally, an assignment is defined as a position that an educator is assigned to based on setting, subject, and grade level. An authorization is defined as the services that an educator is authorized to provide to students.

The data source is the California State Assignment Accountability System (CaSAAS) provided by the Commission on Teacher Credentialing. For information on the CaSAAS, visit the CALPADS web page at <https://www.cde.ca.gov/ds/sp/cl/calpadsupdfdash201.asp>.

For more information on the definitions listed above, refer to the Updated Teacher Equity Definitions web page at <https://www.cde.ca.gov/pd/ee/teacherequitydefinitions.asp>.





Teachers Without Credentials and Misassignments (considered "ineffective" under ESSA)

This table displays the number of authorization/assignments of teachers as well as the total number of teachers without credentials and misassignments at the school level. For questions concerning the permits, waivers, and misassignment of teachers, visit the California Commission on Teacher Credentialing website at <https://www.ctc.ca.gov/>.

Teachers Without Credentials and Misassignments	Two-Year Data	
	2020-21	2021-22
Authorization/Assignment		
Permits and Waivers	0.0	1.0
Misassignments	0.0	0.4
Vacant Positions	0.0	0.0
Total Teachers Without Credentials and Misassignments	0.0	1.3

Credentialed Teachers Assigned Out-of-Field (considered "out-of-field" under ESSA)

This table displays the number of teachers and the total out-of-field teachers at the school level.

For more information on the definitions listed above, refer to the California Commission on Teacher Credentialing's Administrator's Assignment Manual at <https://www.ctc.ca.gov/credentials/manuals>.

Credentialed Teachers Assigned Out-of-Field	Two-Year Data	
	2020-21	2021-22
Indicator		
Credentialed Teachers Authorized on a Permit or Waiver	0.0	0.0
Local Assignment Options	1.1	0.7
Total Out-of-Field Teachers	1.1	0.7

Class Assignments

This table displays the number of teachers and the total out-of-field teachers at the school level.

Misassignment and vacant teacher position data should be available in the district's personnel office.

Class Assignments	Two-Year Data	
	2020-21	2021-22
Indicator		
Misassignments for English Learners (a percentage of all the classes with English learners taught by teachers that are misassigned)	0.0%	0.9%
No credential, permit or authorization to teach (a percentage of all the classes taught by teachers with no record of an authorization to teach)	0.0%	0.0%

The data source is the California State Assignment Accountability System (CalSAAS) provided by the Commission on Teacher Credentialing. For information on the CalSAAS, visit the CALPADS web page at <https://www.cde.ca.gov/ds/sp/cl/calpadsup-dflash201.asp>.

For more information on the definitions listed above, refer to the Updated Teacher Equity Definitions web page at <https://www.cde.ca.gov/pd/ee/teacherequitydefinitions.asp>.



Academic Counselors and School Support Staff

This table displays information about academic counselors and support staff at the school and their full-time equivalent (FTE).

Ratio of Pupils to Academic Counselors and School Support Staff Data

2022-23 School Year

	Ratio
Pupils to Academic counselors	455:1
Support Staff	FTE
Counselor (academic, social/behavioral or career development)	2.0
Library media teacher (librarian)	0.0
Library media services staff (paraprofessional)	1.0
Psychologist	1.0
Social worker	0.0
Nurse	1.0
Speech/language/hearing specialist	0.5
Resource specialist (nonteaching)	1.0



Financial Data

The financial data displayed in this SARC is from the 2021-22 fiscal year. The most current fiscal information available provided by the state is always two years behind the current school year and one year behind most other data included in this report. For detailed information on school expenditures for all districts in California, see the California Department of Education (CDE) Current Expense of Education & Per-pupil Spending web page at www.cde.ca.gov/ds/fd/ec. For information on teacher salaries for all districts in California, see the CDE Certificated Salaries & Benefits web page at www.cde.ca.gov/ds/fd/cs. To look up expenditures and salaries for a specific school district, see the Ed-Data website at www.ed-data.org.

District Financial Data

This table displays district teacher and administrative salary information and compares the figures to the state averages for districts of the same type and size based on the salary schedule. Note: The district salary data does not include benefits.

Salary Data	2021-22 Fiscal Year	
	Pittsburg USD	Similar Sized District
Beginning teacher salary	\$56,179	\$54,190
Midrange teacher salary	\$83,896	\$85,111
Highest teacher salary	\$104,258	\$104,998
Average elementary school principal salary	\$141,149	\$132,492
Average middle school principal salary	\$150,465	\$140,986
Average high school principal salary	\$164,739	\$153,884
Superintendent salary	\$247,200	\$255,502
Teacher salaries: percentage of budget	33.42%	32.09%
Administrative salaries: percentage of budget	6.08%	5.25%

Financial Data Comparison

This table displays the school's per-pupil expenditures from unrestricted sources and the school's average teacher salary and compares it to the district and state data.

Financial Data Comparison	2021-22 Fiscal Year	
	Expenditures Per Pupil From Unrestricted Sources	Annual Average Teacher Salary
Hillview JHS	\$8,925	\$84,584
Pittsburg USD	\$10,825	\$85,780
California	\$7,607	\$87,362
School and district: percentage difference	-17.6%	-1.4%
School and California: percentage difference	+17.3%	-3.2%

School Financial Data

The following table displays the school's average teacher salary and a breakdown of the school's expenditures per pupil from unrestricted and restricted sources.

School Financial Data	
2021-22 Fiscal Year	
Total expenditures per pupil	\$10,607
Expenditures per pupil from restricted sources	\$1,682
Expenditures per pupil from unrestricted sources	\$8,925
Annual average teacher salary	\$84,584



Expenditures Per Pupil

Supplemental/restricted expenditures come from money whose use is controlled by law or by a donor. Money that is designated for specific purposes by the district or governing board is not considered restricted. Basic/unrestricted expenditures are from money whose use, except for general guidelines, is not controlled by law or by a donor.

Data for this year's SARC was provided by the California Department of Education and school and district offices. For additional information on California schools and districts and comparisons of the school to the district, the county and the state, please visit DataQuest at <http://dq.cde.ca.gov/dataquest>. DataQuest is an online resource that provides reports for accountability, test data, enrollment, graduates, dropouts, course enrollments, staffing and data regarding English learners. Per Education Code Section 35256, each school district shall make hard copies of its annually updated report card available, upon request, on or before February 1. All data accurate as of January 2024.